

DIGILINK E400 Patch cables or patch cords are electrical cables, used to connect ("patch in") one electronic device to another for signal routing. Patch Cords are assemblies of 4 twisted pairs 24 AWG (0.51mm) stranded wire cables with modular plugs crimped on both ends. T568A and T568B wiring schemes are both available.



Product Features & Compliances

- Available in the lengths of 1, 2 & 3 m
- Cat 5e+ Unshielded Twisted pair 100 Ω stranded cable
- Exceeds the performance requirements as specified under EIA/TIA 568 A/B.
- 4 Pair 24 AWG Round
- UL94V-0 rated plastic
- RoHS Compliant
- ETL Verified
- ANSI/TIA/EIA-568-B.2
- ISO/IEC-11801
- Performance verified upto 400 MHz

Specifications

Mechanical

Length: 1, 2 & 3 m
 Standard Colours: Grey (other colours available on order) Polycarbonate Plug
 Stranded, Unshielded
 Gold over Nickel Contacts

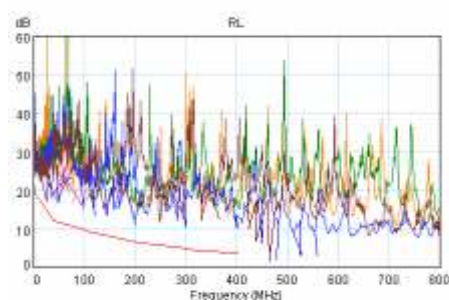
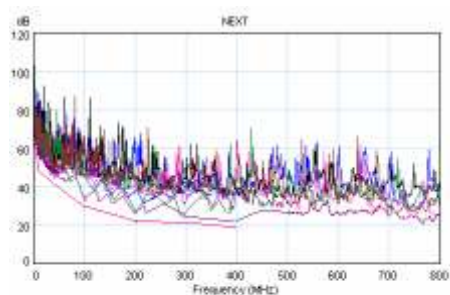
Electrical

Current rating: 1.5A max
 Insulation resistance: 500m Ω (min)
 Voltage rating: 30 V
 Contact Resistance: 15 m Ω (max) per contact

DIGILINK Category 5e+ (E400) UTP 100 Ohm LAN Patch Cords

PERFORMANCE CHARACTERISTICS TIA/EIA-568-B2												
FREQUENCY (MHz)	INSERTION LOSS (Attenuation) dB/100m		NEXT (dB)		PSNEXT (dB)		ELFEXT (dB)		PSELFEXT (dB)		RETURN LOSS (dB)	
	Standard	DIGILINK	Standard	DIGILINK	Standard	DIGILINK	Standard	DIGILINK	Standard	DIGILINK	Standard	DIGILINK
1	2.3	2	62.5	70.1	59.5	68.5	56.4	71.7	53.4	69.9	17	28.4
4	4.5	3.9	53.5	61.7	50.5	59.6	45.4	60.7	42.4	59.5	17	25.8
8	6.3	5.5	48.6	55.9	45.6	54.8	39.3	53.8	36.3	52.3	17	22.7
10	7.1	6.2	47	56.3	44	54.1	37.4	51.9	34.4	50.5	17	25.7
16	9.1	7.8	43.6	54.5	40.6	52.5	33.3	48	30.3	46.3	17	25.9
20	10.2	8.7	42	54.1	39	51.9	31.4	45.7	28.4	44	17	27
25	11.4	9.8	40.3	51.9	37.3	48.8	29.4	43	26.4	41.6	16	25.8
31.25	12.9	11	38.7	46.4	35.7	43.2	27.5	41	24.5	39.4	15.1	23.9
62.5	18.6	15.8	33.6	43.5	30.6	40.7	21.5	33	18.5	30.6	12.1	17.8
100	24	20.3	30.1	36	27.1	34.8	17.4	29.3	14.4	28	10	15.6
200	35.3	29.7	24.9	33.7	21.9	31.8	11.4	22.3	8.4	21.9	7	12.7
250	40.1	33.7	23.2	25.6	20.2	23.9	9.4	19	6.4	16.7	6	17.8
300	44.6	36.9	21.8	26.9	18.8	26.5	7.9	19.3	4.9	16.5	5.2	10.8
350	48.6	39.2	20.4	24.8	17.2	23.8	6.8	17.8	3.2	14.3	4.6	10.6
400	52.7	44.1	19.6	22.1	16.6	21.1	5.4	15.7	2.4	12.6	4	10

** Extrapolated Values



Ordering Information

Description	Type	Length	Product Code
DIGILINK Cat 5e+ UTP patch cord Premium range Patch Cord	Grey	1m	DCEPCURJ01-GYM
		2m	DCEPCURJ02-GYM
		3m	DCEPCURJ03-GYM
	Red	1m	DCEPCURJ01-RDM
		2m	DCEPCURJ02-RDM
		3m	DCEPCURJ03-RDM
	Green	1m	DCEPCURJ01-GNM
		2m	DCEPCURJ02-GNM
		3m	DCEPCURJ03-GNM
	Blue	1m	DCEPCURJ01-BLM
		2m	DCEPCURJ02-BLM
		3m	DCEPCURJ03-BLM
	Yellow	1m	DCEPCURJ01-YLM
		2m	DCEPCURJ02-YLM
		3m	DCEPCURJ03-YLM
DIGILINK Cat 5e+ UTP patch cord Economy range Patch Cord	Grey	1m	DCEPCURJ01-GY
		2m	DCEPCURJ02-GY
		3m	DCEPCURJ03-GY
	Red	1m	DCEPCURJ01-RD
		2m	DCEPCURJ02-RD
		3m	DCEPCURJ03-RD
	Green	1m	DCEPCURJ01-GN
		2m	DCEPCURJ02-GN
		3m	DCEPCURJ03-GN
	Blue	1m	DCEPCURJ01-BL
		2m	DCEPCURJ02-BL
		3m	DCEPCURJ03-BL
	Yellow	1m	DCEPCURJ01-YL
		2m	DCEPCURJ02-YL
		3m	DCEPCURJ03-YL